

905 South Blvd. East
Rochester Hills, MI 48307
Phone: (248) 844-5400
Fax: (248) 844-5404

1435 Randolph, Suite 400
Detroit, MI 48226
Phone: (313) 967-4700
Fax: (313) 967-4707

39293 Plymouth, Suite 102
Livonia, MI 48150
Phone: (734) 671-4344
Fax: (734) 671-4347

1571 Thousand Oaks, Suite 105
San Antonio, TX 78232
Phone: (210) 691-8434
Fax: (210) 369-9321

www.sda-eng.com
(800) 598-1600

PROPOSED REPAIRS

ASPHALT REPAIRS

2.0" MILL AND OVERLAY

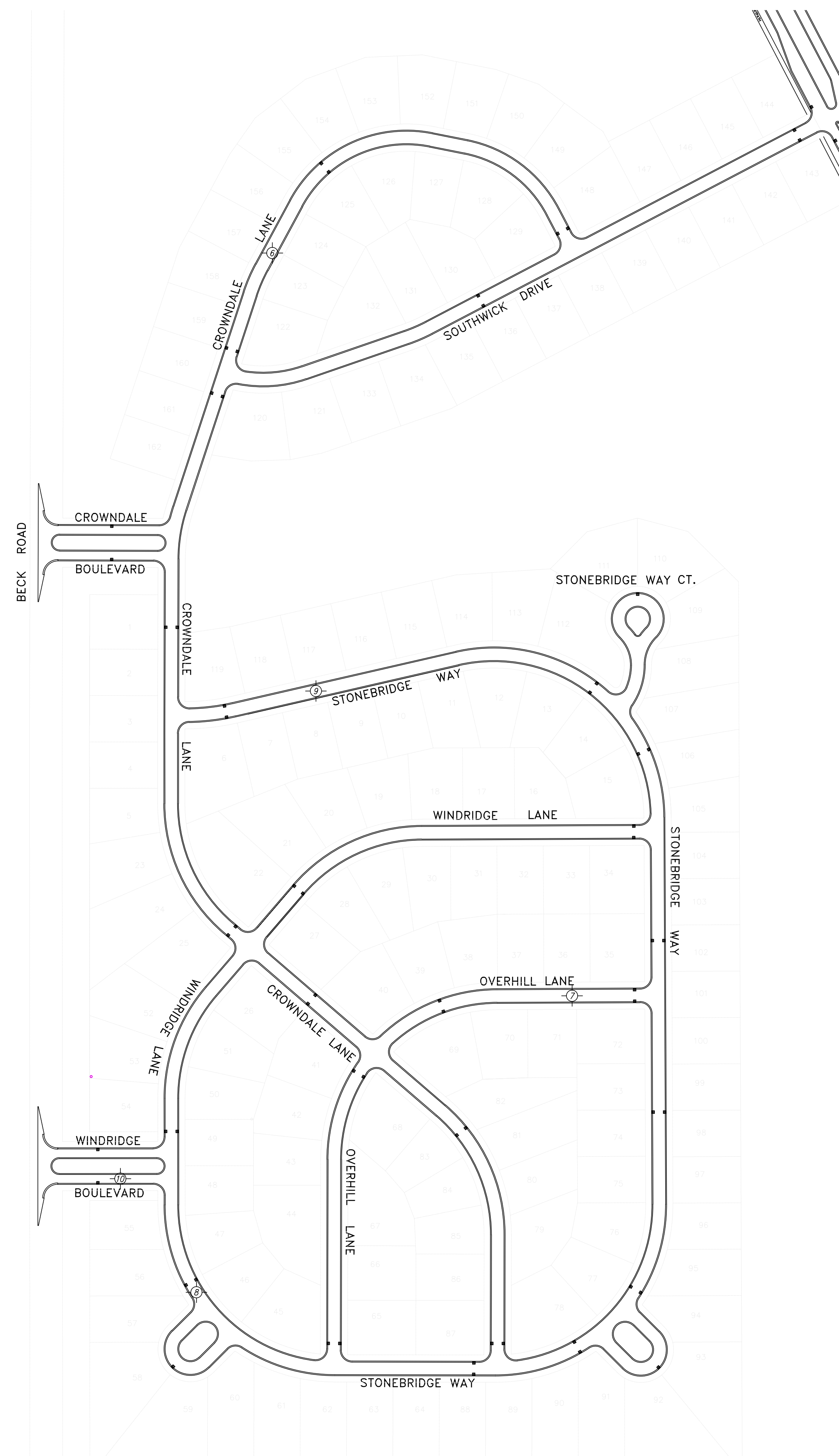
2.5" MILL AND OVERLAY

LEGEND

EXISTING CATCH BASIN

CORE LOCATION

DETAIL REFERENCE
(SEE APPROPRIATE DETAIL SHEET)



**3 WORKING DAYS
BEFORE YOU DIG
CALL MISS DIG.
1-800-482-7171**
For free location of public utility lines

NOTE: UTILITY INFORMATION ON THIS DRAWING MAY BE FROM INFORMATION DISCLOSED TO THIS FIRM BY THE VARIOUS UTILITY COMPANIES, CITY/COUNTY AGENCIES AND OTHER VARIOUS SOURCES. UNDERGROUND UTILITIES WHICH ARE ON PRIVATE PROPERTY ARE USUALLY NOT DELINEATED UPON A UTILITY COMPANY'S PUBLISHED PLANS. THEIR LOCATION, IF SHOWN UPON THIS SURVEY, ARE APPROXIMATED FROM FOUND PAINT MARKS/STAKES, ETC. AS LOCATED BY THIS FIRM FROM SOURCES WHICH ARE UNKNOWN. NO GUARANTEE IS GIVEN AS TO THE COMPLETENESS OR ACCURACY THEREOF.

PRIOR TO CONSTRUCTION, ALL LOCATIONS AND DEPTHS OF EXISTING UTILITIES (IN CONFLICT WITH PROPOSED IMPROVEMENTS) SHALL BE VERIFIED IN THE FIELD. CALL 3 WORKING DAYS PRIOR TO CONSTRUCTION.

COPYRIGHT © 2015 SPALDING DeDECKER ASSOCIATES, INC. THIS DRAWING AND THE SUBJECT MATTER CONTAINED THEREON IS PROPRIETARY AND IS NOT TO BE USED OR REPRODUCED WITHOUT WRITTEN PERMISSION OF SPALDING DeDECKER ASSOCIATES, INC.

**PHEASANT RUN ROADWAY
MAINTENANCE ASSOCIATION**

CANTON TOWNSHIP, MICHIGAN

2015 PAVEMENT REPAIRS

PHEASANT VIEW
PAVEMENT REPAIR PLAN

NO.	DATE	REVISION

DRAFTER J. ENSLEY	DATE 02-09-15
DESIGNER J. ENSLEY	DATE 02-09-15
CHECKED	DATE
PROJECT MANAGER T. SOVEL	BID PLAN DATE
DEPARTMENT MANAGER APPROVAL	DATE

DRAWING SCALE SHOWN VALID
ONLY ON 'D' SIZE (24"x36") PLANS

REDUCED PLANS PROVIDED FOR
REFERENCE PURPOSES ONLY

VERIFY SCALES

BAR IS ONE INCH ON ORIGINAL DRAWING
IF NOT ONE INCH ON THIS SHEET,
ADJUST SCALES ACCORDINGLY

JOB NO. NP14-075.0C	DRAWING NO. NP13013SP
SCALE: NTS	SHEET NO. 4 OF 5